

# Getting Nowhere

How we think the government can make public transport easier for everyone.



Summary Document

# BIG words

In this easy read document, difficult words are in **bold**. We explain what these words mean in the sentence after they have been used.



Some words are blue and underlined. These are links which will go to another website which has more information.

# The Problem



Buses, trains and pavements should be easy for everyone to use, but **transportation** in Ireland has issues.



**Transportation** means the different ways we move from one place to another. It includes riding in cars, buses, trains, and walking, riding a bike or using a wheelchair.



People with disabilities face problems because transportation is not designed well for them.



**Irish Wheelchair Association** is an organisation that ensures the voice of people with disabilities is heard by the government provides services. It also provides services to enable people with disabilities to live more independently.



For a long time, people with disabilities have told the **Irish Wheelchair Association (IWA)** about the difficulties they have been having using public transport.



The [NDA](#) is an independent organization that provides research on promoting design that meets the needs of People with disabilities.



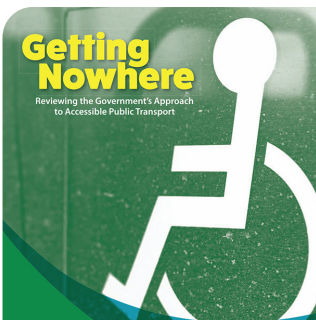
The **National Disability Authority (NDA)** wrote a report about the problems. For example, 7 out of 10 wheelchair users said they had difficulties accessing public transport.



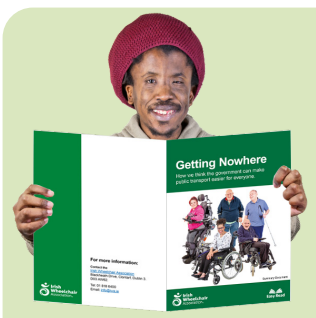
The **government** are the people who make the rules and decisions in Ireland.



The **government** promised to make it better, but they haven't done enough.



The **Irish Wheelchair Association** has prepared a report called "Getting Nowhere" to help people understand the problems.



This document is a summary of that report. A **summary** is a short and simple version of a longer report.



The report explains the issues, provides information and tells us what we can do to make transportation better for everyone.



The report says that the people who plan and build public transport **infrastructure** don't consider people with disabilities enough when they are deciding what to build.



**Infrastructure** is the big system that help a place or a city work smoothly.



The **IWA** says the law needs to change so that the people who plan and build public transport networks have to make them easier for everyone to use.

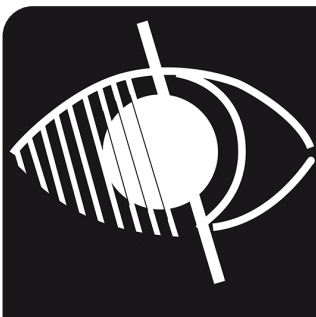
# The Investigation



The **Minister for Transport** promised to make transport easier for everyone. The Minister for Transport is the person in charge of making sure everyone can travel around Ireland without any problems.



They promised to include things like ramps and **audio/visual aids** in new designs for new trains and buses. They also promised to make old trains and buses better.



**Audio/visual aids** are pictures, videos, or sounds to help us learn and understand things.

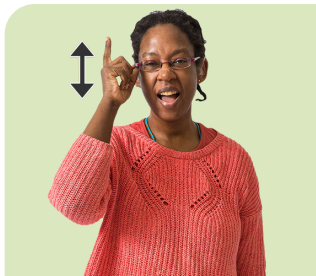


It puts people with disabilities in danger, and can leave them out, making them unable to work or see friends.



Public transport infrastructure needs to change and this report has some ideas on how we can make our trains and buses easier for everyone to use.

# Understanding Transportation Stages



Understand

It is important to understand the stages involved in planning and building a new transport system.

There are three stages:

## 1. Planning

Before building, there's a **planning** stage. Planning means making a plan for what to do.



Plans don't consider the needs of people with disabilities enough.



**Disability Impact Assessment** is a set of questions asked of planners to make sure they are considering people with disabilities in their project planning.



**Disability Impact Assessments** are not working well. Sometimes they don't even happen.



People with disabilities are not heard in **public consultations**.



A **consultation** is when a group of people gather together to discuss and decide things like how to make their town or community better or what rules to have.



The people who plan to build new public transport systems have no way of knowing if it will be easy to use because they don't ask people with disabilities what they need.



## 2. Design

**Design** means making things look and work well.



Designers should follow rules to make sure the things they design are safe, usable, and consistent.



We want clear rules for public transportation that everyone has to follow, and we want people with disabilities to help make these rules.



Even when rules are required, they are not **enforced** well.



**Enforced** means making sure people follow the rules.



Cyclists get more attention than people with disabilities.



We should be making our roads safe for both cyclists and people with disabilities, not just for cyclists.



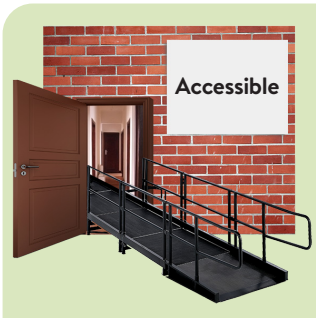
Nobody is being made to follow the rules to make transportation easier to use.

---



### 3. Post-Construction (Audits)

**Post-Construction** is what happens after you building something.



After building, we need to make sure things are **accessible**.



**Accessible** means that something is easy for everyone to use, no matter who they are.



There are no clear rules for this.



**Audits** don't consider people with disabilities enough. **Audits** are checks to make sure things are done correctly.

---

# United Nations and Government Commitments



Ireland promised to make **public services accessible** for people with disabilities.



**Public services** include things like schools, hospitals and transport that make our lives better and easier, and they're there to help all of us.



The **UNCRPD** says accessibility is a human right.



The **UNCRPD** stands for the [“United Nations Convention on the Rights of Persons with Disabilities.”](#) It’s a big agreement made by many countries to protect the rights and make life better for people with disabilities.



There are no strong rules in Irish Law to make sure Transport is accessible.

# What needs to be included?



We want the government to make some really important rules about how things should be easy for people with disabilities.



These rules have to be very strict, and everyone has to follow them.



If someone doesn't follow these rules, there should be consequences, like having to pay a fine.



**Consequences** are what happens after you do something, whether it's good or not so good. If you do something not so good, the consequences could be something that helps you learn from your mistake.



These rules should cover a lot of different things and make sure people with disabilities can use transportation easily.



Before making these rules, the government should talk to people with disabilities and groups that represent them to make sure they are fair and work for everyone.

# Conclusion



Sometimes, when we use buses and trains, they might not be easy for everyone, especially people with disabilities.



This happens because there aren't strong rules and laws to make sure everything is accessible and easy for everyone.



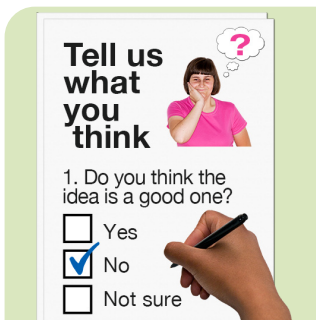
We need to make new laws that say things must be easy to use for everyone, and we have to check and make sure people follow these rules.



If people don't follow the rules, there should be consequences like fines.



We need clear rules, checking, and consequences to make transportation accessible for everyone.



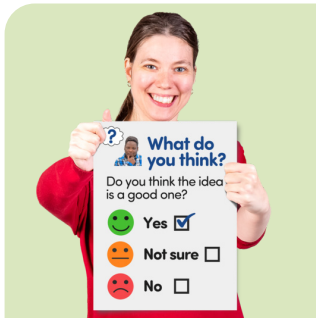
People with disabilities should be a part of making these rules and checking if they are good enough.



There aren't strong enough rules to make transport accessible to everyone.



Plans to help the environment should also be good for people with disabilities. The current way things are, people with disabilities are the most likely to be harmed by changes in the environment.



We need to listen to what people with disabilities say and change our plans to make sure everyone can use public places safely.



Right now, things are not good for people with disabilities, and we need to make it better.

## For more information:

Contact the

[Irish Wheelchair Association](#)

Blackheath Drive, Clontarf, Dublin 3.  
D03 AW62.

Tel: 01 818 6400

Email: [info@iwa.ie](mailto:info@iwa.ie)

