

# Guide to Moving from Children's Services to Adult Services





This is an Easy Read version of some hard information. It may not include all of the information but will tell you about the important parts.



This Easy Read information uses easier words and pictures. You may still want help to read it.



Some words are in **bold** - this means the writing is thicker and darker.



These are words that some people will find hard. When you see a **bold** word, we will explain it in the next sentence.



Blue and underlined words show links to websites and email addresses. You can click on these links on a computer.

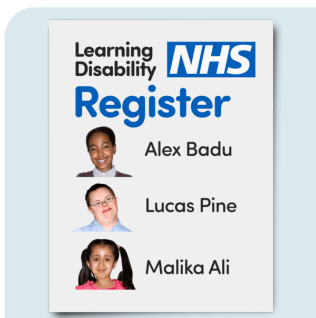
# What is in this booklet?

- 1** About this booklet
  - 2** What is transition?
  - 3** Important things to know
  - 4** How Transition works
  - 5** What happens next?
  - 6** Your rights
  - 7** What if you are not happy?
  - 8** About Adult Services
  - 9** Get more information
-

# About this booklet



This document helps young people with a **Learning Disability** who may also have Autism understand how they will move to Adult Services.



A **Learning Disability** means you may need extra help with learning and everyday tasks.



Autism affects how you talk to other people and understand feelings.



This document is also for Parents, Carers, Teachers, Doctors, Nurses, and Social Workers.

# What is Transition?



**Transition** means the time when big changes happen in a person's life.



In this document, Transition means the big changes when you move from Children's Services to Adult Services, leave school, get new support, and grow up.



This change does not happen all at once. It takes place over many years.

# Important Things to Know



You should help make choices about your future.



Your School and Social Worker will start planning with you when you are 14.



You should get information that is easy to understand.



Your family should be part of planning for your future.



All your helpers should work together and know how to help you.

# How Transition Works



When your Transition starts, you will get a **Named Worker**.



Your **Named Worker** will help organise your care, support you and your family, help you find the right help, and make sure people listen to you.



There is also a **Transition Link Worker**.



Your **Transition Link Worker** sets up meetings, keeps track of all young people in transition, and makes sure the right people have the right information.



You will have a **Transition Handover Plan**. This will be part of your Care Plan.



This plan lists all the help you need for your health, social care, school, jobs, and where you will live.



Your plan will be checked regularly to make sure it still works for you.

# What Happens Next?



You should have access to an **Advocate**.

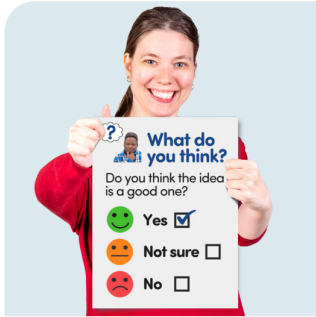


An **Advocate** is someone who helps you say what you think and makes sure people listen to you.



They can help you get information and make decisions.

---



Before you turn 16, there will be a meeting to review your plan and make sure it includes everything you need.



You and your family will be told what changes to expect and what support will be available when you move to Adult Services.



If you need support for the first time at age 16 or 17, a **Named Worker** will help you get the support you need.

# Moving To Adult Services At 18



You will stay with Children's Services until age 18.



After you turn 18, Adult Services will take over your care and support.



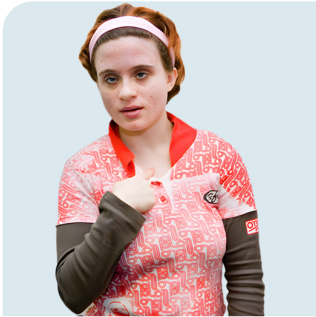
**Support**

Some services may be different, but your support should continue.

# Your Rights



There are laws to protect young people with disabilities and make sure you get the right support.

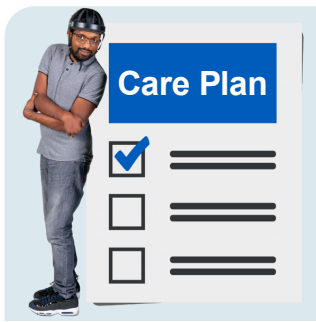


You have the right to be involved in decisions about your care.



**Rights**

You have the right to support to understand your choices.



You have the right to a Care Plan that meets your needs.



If you need help understanding your rights, you can ask your **Advocate**, **Social Worker** or **Named Worker**.

# What If You Are Not Happy?



You can talk to your **Named Worker** and ask them to check your Care Plan.



You can get an **Advocate** to help you understand your Care Plan, and help you to share your views.

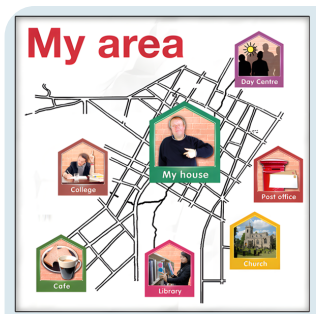
# About Adult Services



Adult Services can help you learn new skills and find a job.



They can also help you live on your own, take care of your health, have fun with friends, and get money advice.



Your **Named Worker** or **Transition Link Worker** can help you find out what is available in your area.

# Get More Information



To learn more about your Transition, you can talk to your **Social Worker** or **Named Worker**. You can ask for a copy of your Care Plan, or speak to the **Transition Link Worker**.

## Need Help?

If you need this information in a different way, please tell us. This includes getting it in other languages.

## **For more information:**

**Contact the**  
Department of Health  
Castle Buildings  
Stormont  
Belfast  
Northern Ireland  
BT4 3SQ

Telephone: 028 9052 0500

Email: [webmaster@health-ni.gov.uk](mailto:webmaster@health-ni.gov.uk)